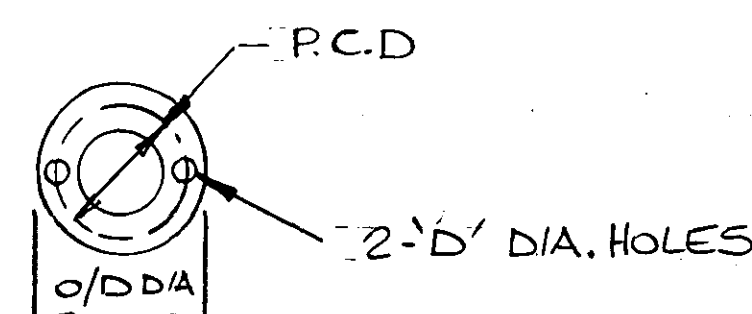


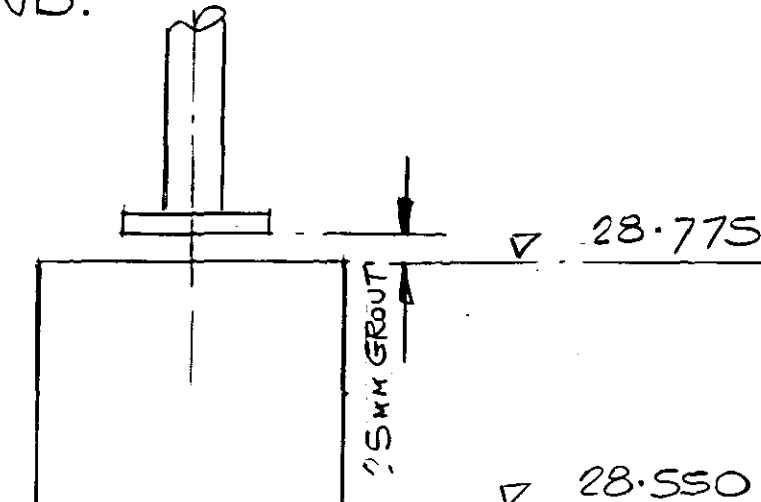
FINISH: STEELWORK RED OXIDE				SCREWED ITEMS ELECTRO PLTD ZINC/TUBULAR GALV										
REF	TYPE	QTY	PIPE DIA	DIMENSIONS								REQUIRED VARIABLES (SEE STANDARD DRG)	REMARKS	
				A	B	C	D	E	F	G				
A	H37/1	1	40	2458	2428	-	-	-	-	-	-	-	1A,3A, GC	
B	H37/1	2	65	2458	2414	-	-	-	-	-	-	-	1B,3A, GE	
C	H30/2	1	4325	600	704	-	-	-	-	-	-	-	1C, 1E	
D	H92/423	2	25	-	700	-	-	-	-	-	-	-	1A, 2A	DIM 'B' CUT ON SITE
E	H30/003	3	40/25	120	224	-	-	-	-	-	-	-	1E, 1C	1OFF - 1E, 1OFF - 1C
F	H302/426	1	40	-	700	-	-	-	-	-	-	-	1C, 2A	DIM 'B' CUT ON SITE
G	H30/001	10	43/25	-	-	-	-	-	-	-	-	-	1C, 1E (TOP EACH)	(AI NOT REQUIRED)
H	H30/001	4	65/8	-	-	-	-	-	-	-	-	-	1C, 1G (EACH)	" " "

STANDPIPE BASEPLATE DETAILS.



NOTE:-



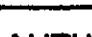
ALL STANDPIPE CONCRETE
PLINTHS, REF A, B & DA TO BE
PROVIDED BY OTHERS. DEPTH OF
FOUNDATION TO SUIT NATURE OF
GROUND.

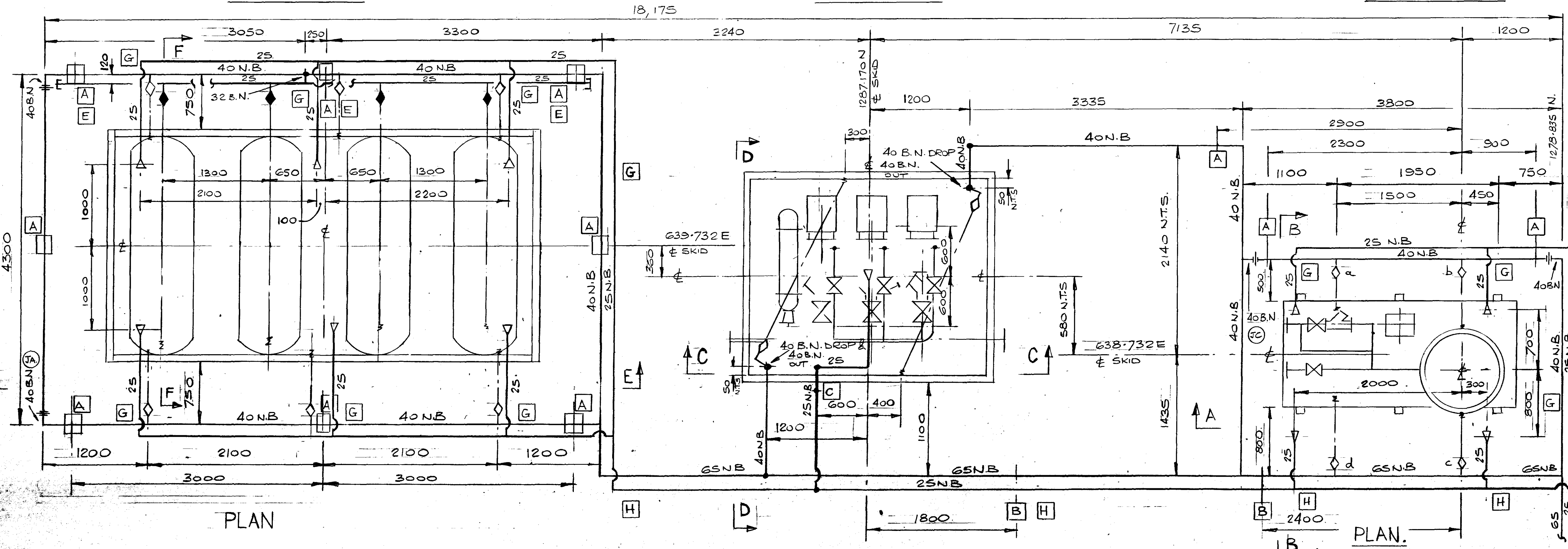
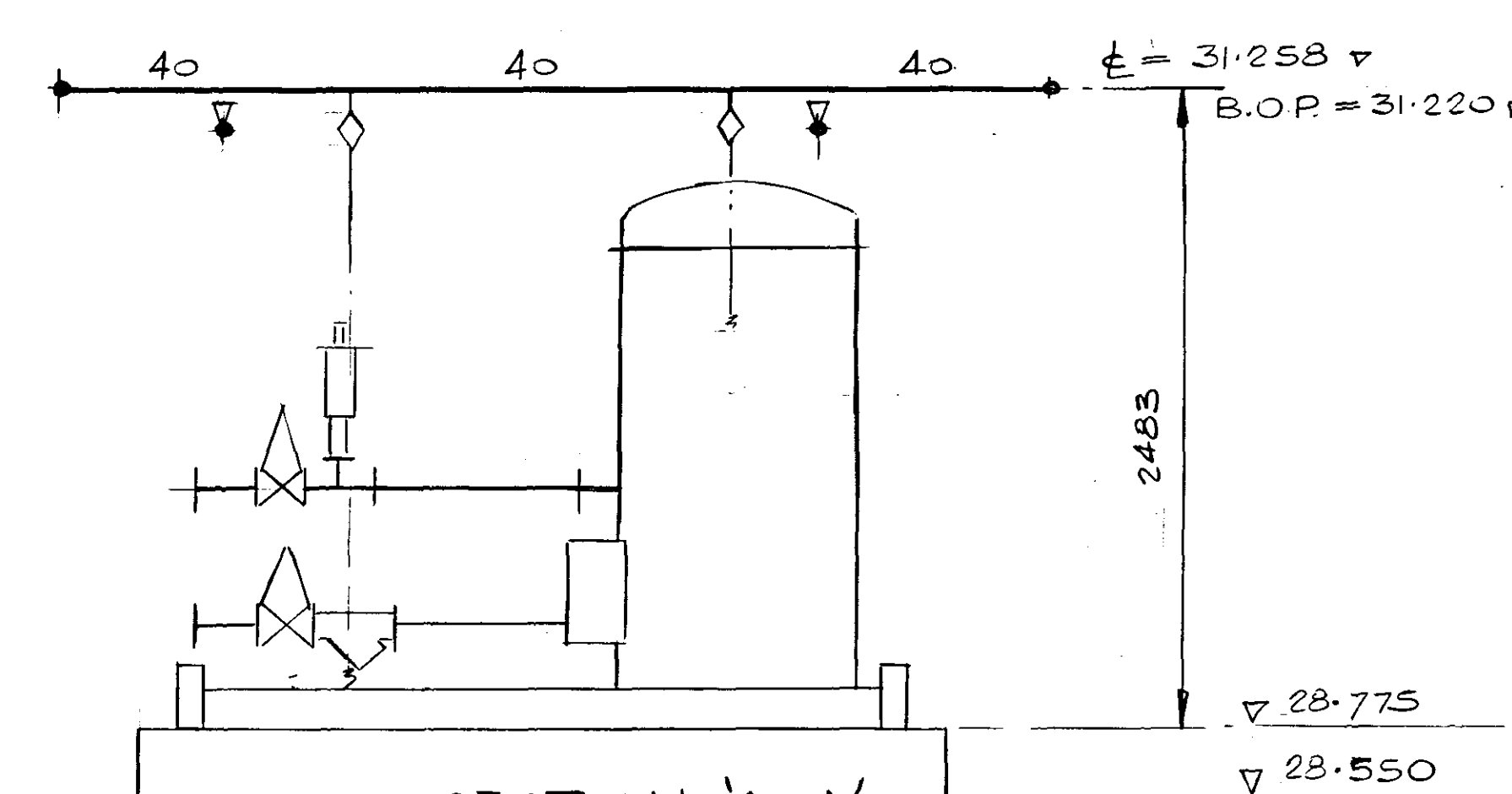
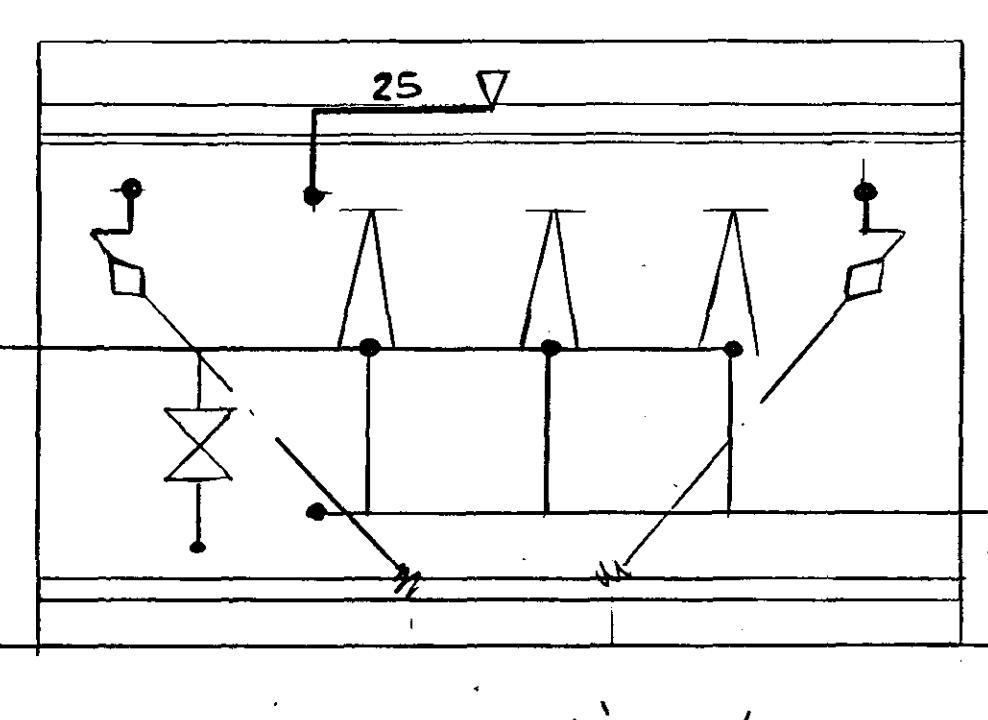
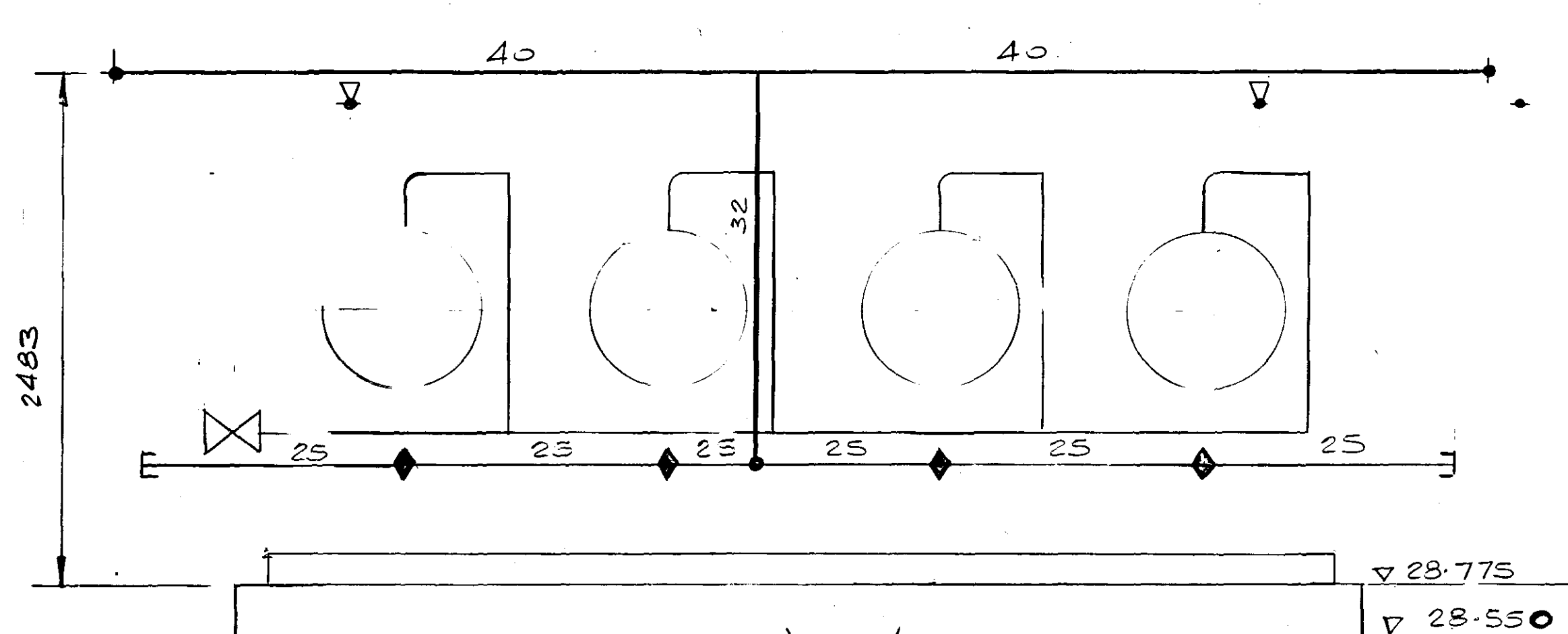
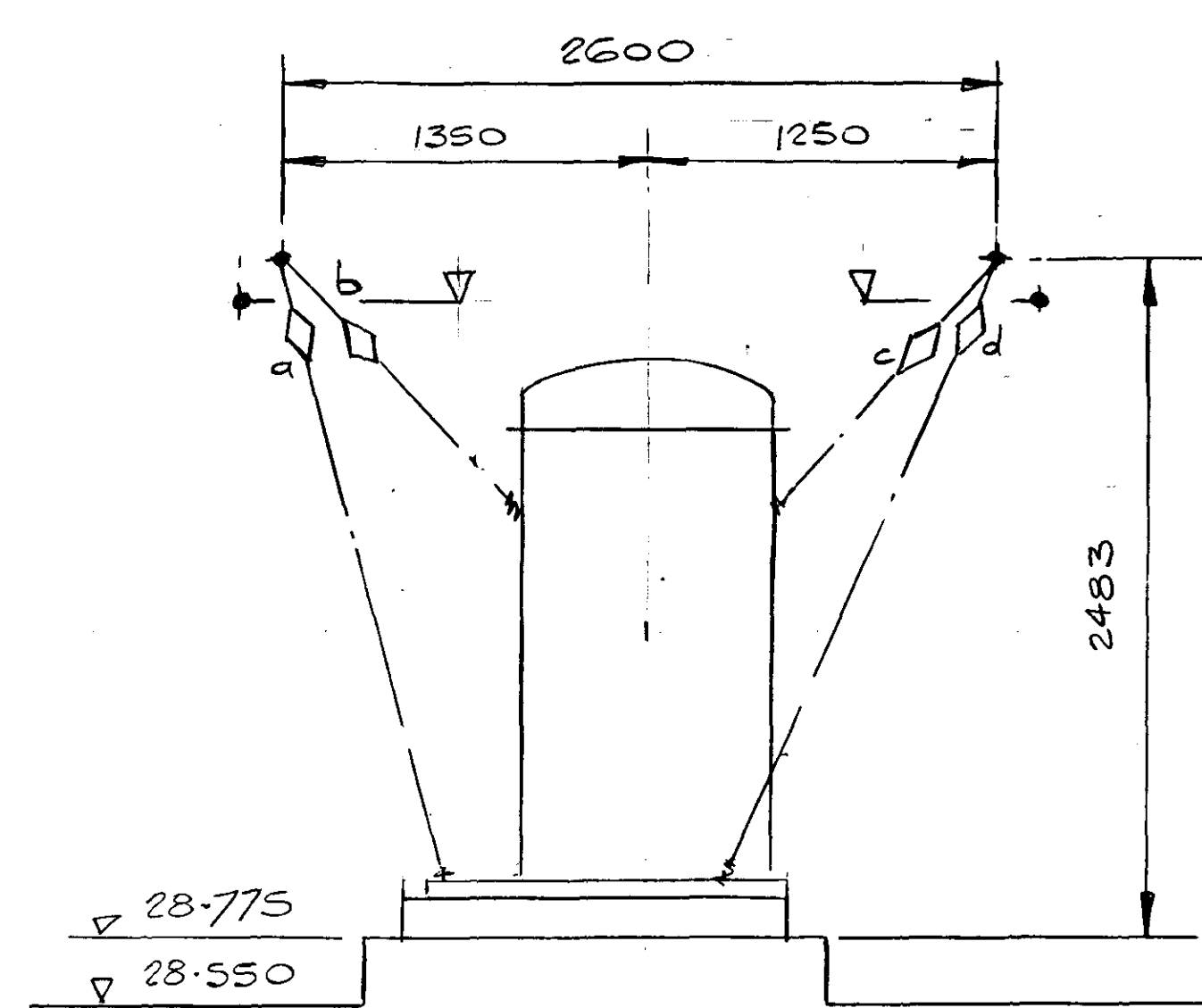
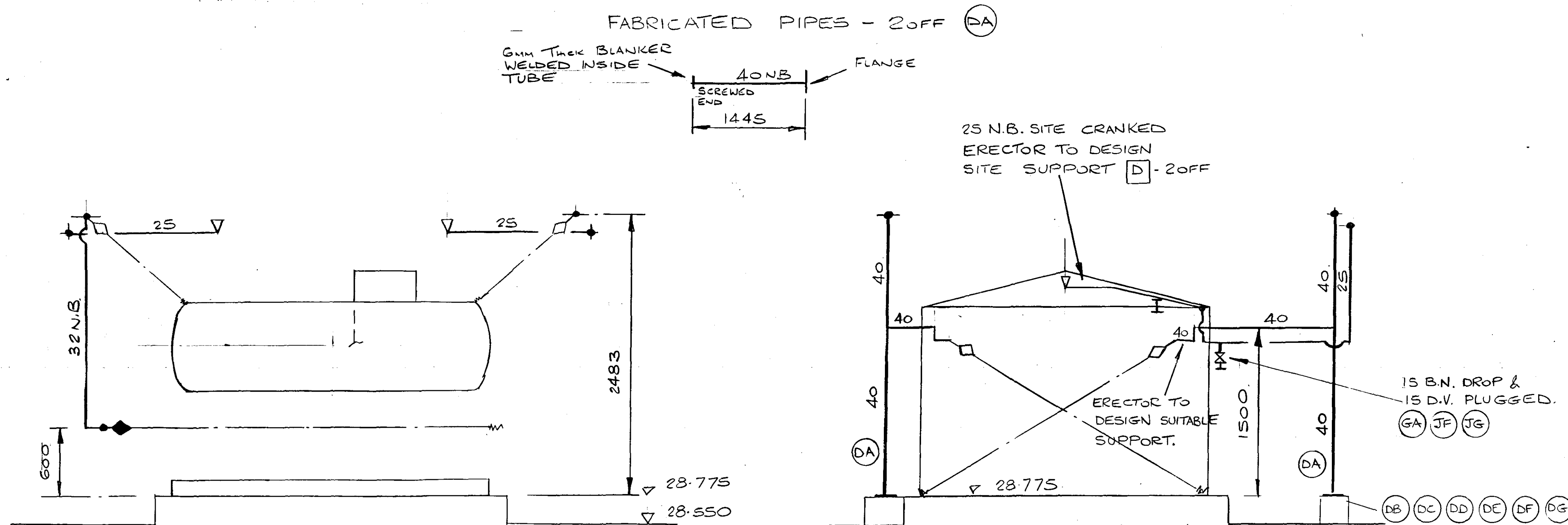


DETAIL @ BASE OF TUBULAR SUPPORTS

[illegible]

HYDRO ELECTRIC DRAWING REGISTRY COPY	HYDRO - ELECTRIC PETERHEAD GENERATING STATION		HYDRO ELECTRIC RECEIVED 30 JAN 1991
DRAWING NO.	SHEET NO.	REV. NO.	
2052600/cg	036/1323/7153	01	02
JOHN BROWN		John Brown Engineering Limited Clydebank, Dunbartonshire G81 1YA	
J.B.E. ORDER NUMBER :			
J.B.E. DRAWING NUMBER : 0398 - 7403 - 072 REV 'B'			

FIRE PROTECTION EQUIPMENT		<div>CLIENT</div> <div>JOHN BROWN ENGINEERING LTD., CLYDEBANK, DUNBARTONSHIRE</div>		<div>CONTRACT</div> <div>PETERHEAD G.T. PS</div>	
ORDER NO. CP 903047		ITEM NO.		 <div>WORMALD ENGINEERING AND CONTRACTING DIVISION</div>	
DRAWN BY KDH		DATE 22.10.90			
CHECKED BY 		AUTHORISED BY 			
TITLE COALESCE MODULE (DISTILLATE FUEL OIL & TRANSFER SKID) PROT ^N & DET. - PLAN & SECT ^N				DRAWING NUMBER	
				CT 903047-M-59	
				ISSUE	
				A B	



NORTH

CONT. FROM DRG. N°
CT 903047-M-58.

ISSUE						
FIN						
MATE						
HKD						
PP						
ISSUE	A	ORIGINAL	B	STANDPIPE		
FIN	X	ISSUE	KDH	LOADS ADDED		
MATE	X		6/198			
HKD	X		APJ			
PP	2		AD			




TO THE CLIENT
WORMOLD AND SONS (U.K.):
LTD DO NOT ACCEPT ANY RESPONSIBILITY
FOR DAMAGE CAUSED BY FROST. CLIENTS
SHOULD TAKE ADEQUATE PRECAUTIONS
AGAINST THE WATER IN THE VALVES &
PIPEWORK FREEZING & BELOW THE VALVES
DURING SEVERE WEATHER.
HOLES IN WALLS PARTICULARLY BEAMS OF
CEILINGS THROUGH WHICH PIPES PASS
MUST NOT BE FILLED IN WITH MATERIALS
WHICH HAVE A DELETERIOUS EFFECT ON
THE CONCRETE.
CONTROL VALVES SHOULD NOT BE SUB-
JECTED TO A TEMPERATURE EXCEEDING
65°C. PIPES, SCAFFOLDING OR ANY OTHER
ITEMS OF PLANT MUST NOT AT ANY TIME BE
EXPOSED TO A TEMPERATURE BELOW THE
PART OF THE FIRE PROTECTION EQUIPMENT

WARNING
CONTROLS, PROJECTORS, SPRAYERS
& SPRINKLERS MUST NOT BE PAINTED.

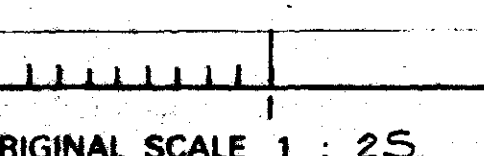
TO THE ERECTOR
ALL CONTROLS & SPRINKLERS TO BE FIXED
UPRIGHT UNLESS OTHERWISE SHOWN
ON DRAWINGS.
PROJECTOR/SPRAYERS MUST BE ERECTED
AS SHOWN.
WHERE AN INSTALLATION WILL BE CHARGED
WITH AIR AT ANY TIME, THE PIPEWORK
MUST BE ARRANGED TO SLOPE AS
FOLLOWS. (UNLESS OTHERWISE STATED)
PIPES 50mm DIA AND LARGER 2mm IN EVERY
METRE.
PIPES 40mm DIA AND SMALLER 4mm IN
EVERY METRE.
WET INSTALLATION PIPEWORK MUST BE
ARRANGED TO SLOPE 2mm IN EVERY METRE.

FLANGES (UNLESS STATED OTHERWISE)	—	WELDING	—		
FITTINGS	B.S. 143 GALV	FLOW AND PRESSURE REQUIRED AT VALVE	1209 dm ³ /min @ 8.7 BAR.		
		AREA OF OPERATION	DELUGE		
		STORAGE HEIGHT	—		
PIPEWORK	B.S. 1387 M.GALV	WATER CLASS	—		
		DESIGN PRESSURE	3.5 BAR		
		DESIGN DENSITY RATE	—		
		SYSTEM DESIGN CODE	—	CR303 047 - M64	CALCULATIONS.
		TYPE OF PROTECTION	MULTISIFYRE	CR303 047 - M63	NODE DIAGRAM
ITEM	STANDARD			DRAWING NO.	TITLE
MATERIAL STANDARDS		DESIGN DATA		THIS DRAWING TO BE READ IN CONJUNCTION WITH THE ABOVE WORKMANSHIP & CONTRACTING DRS	



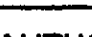
2	17613 (SKID ENCLOSURE)
C	0998-7431-006
C	0998-6816-006
2	0998-6812-006
O	0998-6810-006
3	0998-6702-006
ISSUE	DRAWING No.
CLIENTS REFERENCE DRGS	

	DETECTOR
	HV 17
	HV 26
SYMBOL	DESCRIPTION

LINEAR SCALE



ORIGINAL SCALE 1 : 25

FIRE PROTECTION EQUIPMENT		CONTRACT PETERHEAD G.T. PS									
CLIENT JOHN BROWN ENGINEERING LTD., CLYDEBANK, DUNBARTONSHIRE		 WORMALD ENGINEERING AND CONTRACTING DIVISION									
ORDER No. CP 503047	ITEM No.	DRAWING NUMBER CT 903047-M-59									
DRAWN BY KDH	DATE 22.10.90										
CHECKED BY 	AUTHORISED BY 										
TITLE COALESCE MODULE (DISTILLATE FUEL OIL & TRANSFER SKID) PROT ^N & DET. - PLAN & SECT ^N		ISSUE	A B <table border="1" data-bbox="2804 2005 2855 2030"> <tr><td></td><td></td><td></td><td></td></tr> <tr><td></td><td></td><td></td><td></td></tr> </table>								